

## *THE LONELY RUIN by Rob Borsje*

The Society was recently alerted to homesite ruins just off Tudor Park/Flynn Road by a member of the public. He emailed us two photos and asked about the history of this house. This new request prompted our next research field trip - which we do every week – to look for the ruins in the bush adjacent to Tudor Park Road. We found the ruins hidden behind dense bush and walked around the area, noting a track that joined up with Tudor Park Road from the north.



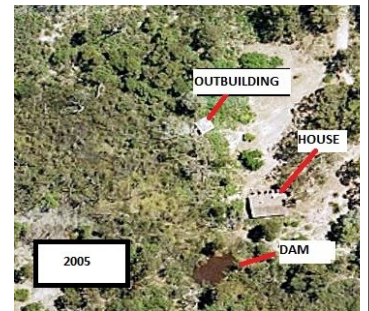
Whilst photographing a window surround we noted it was a 'beer bottle' window. Given that this was 1960/70s fad we realised the house was relatively modern. The beer bottle window is shown to the right.



Although the ruins are still historic, just not one of the early buildings in the Shire, so the next step was to find the Lot number and consult the Rate Books. After looking through the Rate Books we found that the Hurst family, although residing in the eastern states, owned the property from the early 1920s through to the mid-1960s.



Next we looked up Landgate aerial photos, and they revealed that in 1974 some of the land had been cleared, but there was no house. By 1977 the house had been built, as had the shed and water tank. The earliest clear Landgate image is 1985. Everything was fine in 2008.



However, by 2010, the next aerial photo shows the house was burnt out.

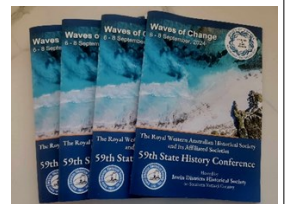
Judging by the lack of any burnt trees surrounding the house in the 2010 aerial photo, it may have been a house fire, not a bush fire, although the shed also appears to have been destroyed, along with a vehicle. We have no idea who lived there between 1974 and 2010, but we do have an outstanding query with the Shire as to who paid the rates which may help lead us to an eventual answer.

*If you know more on this story, please enlighten us!*

*Notwithstanding, we did find remnants of a far older stone building in the vicinity,*

### Because History Matters

## *President Jeff's Jottings*



Recently Trish Beaman (Office Manager) and I met with Councillors Karen Beale and Prapti Mehta to discuss opportunities to further develop our Society's relationship with the Shire Council. This was a most constructive meeting that has increased the Councillors' understanding of what we do and what our role is in researching, collecting, and storing historical information throughout the Shire of Mundaring.

On the weekend of 7<sup>th</sup> and 8<sup>th</sup> of September, I attended the 2024 State History Conference at Dongara. This was a most interesting and informative conference that I encourage everyone to consider in the future. I gained much valuable detail that has been passed onto our Society's Executive Committee. At the conference, I presented a talk labelled 'Cartographic Chronicles – Exploring History Using Maps'. My talk was very well received with many follow-up requests to assist other researchers with their work.

As mentioned in this Newsletter's article on 'Historical Lost and Found Mundaring', Rob, Tracy, and I are venturing out to historical sites throughout the Shire of Mundaring. Each week we investigate a site or incident that will progressively build our Society's historical database. Such visits take considerable time to research and investigate but it is such a worthy cause, as much of the Shire of Mundaring's history has not been recorded. Although we have many historical puzzles yet to be solved, we are always receptive to inquiries from our members and the public.

**THE TEAPOT MYSTERY**  
*by*  
**Tracy Willet - MHHS Curator**

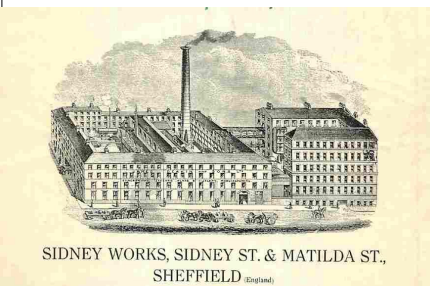
This recently donated teapot was found high up in a tree on Old Northam Road, Chidlow and had obviously been there many years. There is an engraving on one side, *Presented to Mrs L Dodd by her father-in-law, 9 Oct 1914*. It would have been a lovely item to bring out on a special occasion in its day. How did it get up in a tree? Who was Mrs Dodd?



Can you help us solve this mystery? Do you have knowledge of Mrs L Dodd or her family? If so, we would be interested in hearing from you to help us solve this mystery. Contact our Curator on 9295 0540 or [curator@mundaringhistory.org](mailto:curator@mundaringhistory.org).

Mystery solved or not, this teapot holds a place in our collection that reminds us of days gone by. No doubt it had many an interesting conversation around it while it was sitting on the dining room table.

You will note that we have left the teapot in the same condition as we received it. As it is a Collection item, we must resist the urge to polish it in an effort to reveal it's original sheen. The current museum practice is to lightly brush loose particles and dust off and make sure there is nothing remaining that may damage the item whilst in storage. Any effort to regain the silver sheen will remove a layer of the coating. Fingerprints contain salts and grease which are highly corrosive to metal and are difficult to remove so wearing clean cotton or disposable gloves will prevent this.



SIDNEY WORKS, SIDNEY ST. & MATILDA ST., SHEFFIELD (England)

When we were given this teapot we spent many hours researching the item's origin. We looked at the trademark on the base of the pot: "Made in England EPBN J.D & Co Ltd 1296". This led us to many pages of information about a firm founded in 1866 by James Deakin. The firm entered the first trademark in the Sheffield Assay Office on 31st January 1878. James Deakin retired in 1888 and his sons William, John and Albert followed in their father's footsteps under the name James Deakin & Sons Ltd. From here we were led to catalogues which contained even more information. It became obvious that J.D & Co Ltd were prolific manufacturers of silver and other precious metal household items. The firm was active at Sidney Works, Matilda Street, Sheffield UK.

Judging by the image of their premises at this address, business was successful. Unfortunately, after a short-lived business venture in 1935 when the business merged with "Silver & Steecrafts Ltd" it collapsed within 3 years.

Did Mrs Dodd's father-in-law bring it out from England in the early 1900s? Or did he choose it from a mail order catalogue and have it sent from the old country? Was it part of a set, or was it an individual purchase? Did Mr Dodd buy all the family's kitchen and culinary items from one of the aforementioned catalogues?

When we receive donations with very little provenance, we try to find out as much as we can by searching through our archives and other records. The internet has made information gathering easier, however, we can never be sure unless we have information from a known source. This is where we rely on our community. So if any readers have any information about our "tree teapot" we would love to hear from you. Did you know of the Dodds family?

It has been so much fun trawling through the catalogues from the early 1900s to see how our early settlers used mail order to purchase household items. Waiting for months for the items to arrive in Albany or Fremantle and then wait longer for them to be transported to Mundaring.

**It was certainly a long way from today's world of "Click and Collect"!**

## *Historical Lost and Found Mundaring*

Since the Mundaring Heritage Survey Working Group was disbanded last month, 3 members of the MHHS's Executive Committee have maintained their search for hidden gems in the Shire. Jeff, Tracy and Rob meet at the Stationmasters house each week to plan their continued exploration and research of sites in the Shire. Tracy has learnt that Jeff's Landcruiser is too high for her to embark in a lady-like fashion so she tried using her step stool to make it easier to get on board. After several near falls, she has now mastered getting in and out of the vehicle with the use of the handrails.



2024 Aerial view of Yetta Station

After the winter rains some of the sites they are visiting have long grass and with the current warm days there may be snakes lurking. Tracy found that Jeff is fearless while trekking through the long grass so she makes sure she is following well behind and stomping her feet loudly as a deterrent. Back at the office there were discussions about purchasing a first aid kit with instructions for snake bite treatment.

After visiting and researching the Tudor Park Road ruins (Page 1), they started looking at nearby Yetar Springs /Yetta Station (farm). The Flynn family owned the property and by looking at the rates books, maps, Trove and other documents, we hope to create a comprehensive file for our archives. You can look forward to a detailed report on Yetar Springs and the Flynn's Yetta Station in a future Newsletter.

## *Historical Societies*

**W**hat is the role of a Historical Society? The local historical society keeps the historical records of an area. In the Mundaring Shire, Mundaring and Hills Historical Society (MHHS), has been appointed by the Shire to do this. For the last thirty five years we have been tasked to keep records, documents, photographs and objects that pertain to the history of the Shire. We have staff and volunteers with experience and qualifications to keep these records in a professional manner. As times and policies change, we ensure that we are kept up to date with the current trends in museum and archive management.

Although we are only staffed 3 days per week, we find the time to do extra research during and outside office hours. We are passionate about the history of our Shire and work more hours than officially asked. We would love to delve further into the State's historical archives to add to our own records but unfortunately, time precludes this from happening.

We are constantly updating our professional development and ensuring that our volunteers are also well trained. We are members of The Oral History Association, Museums and Galleries Australia, History Council of W.A., The Affiliation of Historical Societies, The Royal Historical Society of W.A., Local Government Curators Network, and Volunteering WA who are all wonderful training resources and we are very thankful for the opportunity to use them.

Historical Societies rely heavily on the community to pass on their family history and recollections of growing up. We urge those of you that have memories, documents, photographs and ephemera of an area and pass them on to your officially appointed Historical Society. In the Shire of Mundaring it is MHHS. We are not suggesting that you don't share with others, just make sure that MHHS is given the opportunity to take copies for the official historical records. You can be confident that your precious items will be well documented, stored and cared for. This includes being shared with the community by their inclusion in exhibitions and education programs when appropriate.

## Upcoming Events 2024

DATE/TIME	EVENT	LOCATION
9th October 4pm	Executive Meeting	Mundaring Lesser Hall Jacoby St Mundaring
13th November 4pm	Executive Meeting	Mundaring Lesser Hall Jacoby St Mundaring
Saturday 16th November 2pm	General Meeting	Boya Community Centre 135 Scott St Boya
Saturday 16th November 2.45pm	Mervyn Beacham "A Life Cut Short" The death of Rueben Beacham Chippers Leap Story	Boya Community Centre 135 Scott St Boya
December To be announced	End of Year Bus Trip Lunch Included	Meet at the Stationmasters House

### WHAT'S IN A NAME- GREAT EASTERN HIGHWAY?



Great Eastern Highway  
passing Mahogany Inn  
1939

The name Great Eastern Highway was gazetted in 1938. It commences at the Eastern end of the Causeway in Perth and extends to the south-western side of Kalgoorlie via Midland Junction and Merredin. Although it is now known as Great Eastern Highway for the whole of the journey, parts of it have also been known as Ascot Road, Guildford Road, York Road, Guildford – Northam Road, Toodyay Northam Road, Mitchell Avenue, Throssell Road, Sermon Road, Dreyer Road, Goldfields Road, Kalgoorlie Road, Woodward Road and Coolgardie Road.



**Follow us on Facebook!**

MundaringAndHillsHistoricalSocietyInc



**MUNDARING & HILLS HISTORICAL SOCIETY INC**  
(ABN 25 028 478 748)

(08) 9295 0540 | [mhhs@mundaringhistory.org](mailto:mhhs@mundaringhistory.org) |  
[www.mundaringhistory.org](http://www.mundaringhistory.org)

**For details on fee structure  
See the information below**

Supported by:



#### MUNDARING STATIONMASTER'S HOUSE

3060 Jacoby Street, Mundaring  
(PO Box 334, Mundaring WA 6073)  
MONDAY AND FRIDAY: 9.30 - 4pm  
WEDNESDAY: 9.30 - 1.30pm  
E: [mhhs@mundaringhistory.org](mailto:mhhs@mundaringhistory.org)  
Ph: 9295 0540

#### MEMBERSHIP FEES

Senior/pensioner: \$15 (Couple \$20)  
Single: \$25 (Couple \$30)  
Company/Institution: \$35  
Account: Mundaring & Hills Historical Society  
BSB 633-000 Acc No 122609431  
*Please quote your surname reference*

#### MUNDARING DISTRICT MUSEUM

7225 GT Eastern Highway Mundaring  
(Inside the Visitor Centre)  
MONDAY - SATURDAY: 9.30am - 4pm  
SUNDAY: 10am—2.30pm